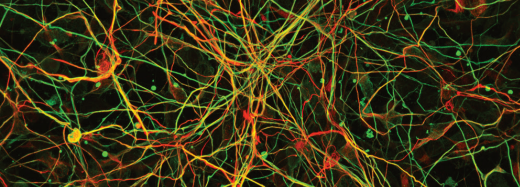
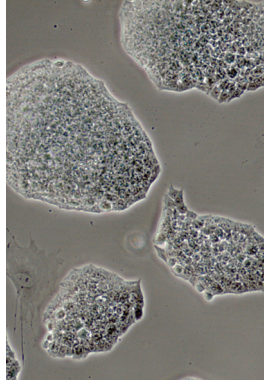


# KU CANCER CENTER SHARED RESOURCES



## TRANSGENIC & GENE TARGETING SHARED RESOURCE

The Transgenic and Gene Targeting (TGTSR) is an important shared resource providing centralized technical services for the production of transgenic and gene-targeted rodents and genetically altered pluripotent stem cells for KU Cancer Center researchers. The TGTSR provides comprehensive services for genetic manipulation of the mouse and stem cell genomes. The TGTSR uses front-end technologies, including genome editing using CRISPR/Cas9 tools, and human induced pluripotent stem cells.

## WHY IS THIS IMPORTANT TO YOUR RESEARCH?

The complex etiology of tumor development and physiological responses to cancer and cancer therapeutics require the use of animal models. As such, genetically altered mouse models are important tools for the researchers at KU Cancer Center. The production and analysis of such models ultimately lead to better understanding of biological processes of tumorigenesis, as well as *in vivo* models for diagnostic testing and cancer treatment.

THE UNIVERSITY OF KANSAS  
CANCER CENTER



## SERVICES

The TGTSR has five major services:

1. Provide technical expertise in experimental design for KU Cancer Center Projects
2. Provide technical support for *in vivo* genetic alteration of mice
3. Provide technical support for genetic manipulation of pluripotent stem cell models
4. Provide support for strain development and maintenance
5. Educate KU Cancer Center researchers and trainees on new and emerging technologies for genetically altered animal models and manipulation of pluripotent stem cells

## LOCATION

The University of Kansas Medical Center campus,  
Hemenway Life Sciences and Innovation Center, room  
G025

## LEARN MORE

Jay L. Vivian, PhD, Director  
jvivian@kumc.edu  
913-588-0341

Melissa Larson, PhD, Technical Director  
mlarson@kumc.edu  
913-588-1005

Was your research supported by KU Cancer Center's NCI Cancer Center Support Grant? If so, please use the following statement in all of your published materials: *Research reported in this publication was supported by the National Cancer Institute Cancer Center Support Grant P30 CA168524 and used the [name of the CCSG Shared Resource(s), if applicable.]*

kucancercenter.org